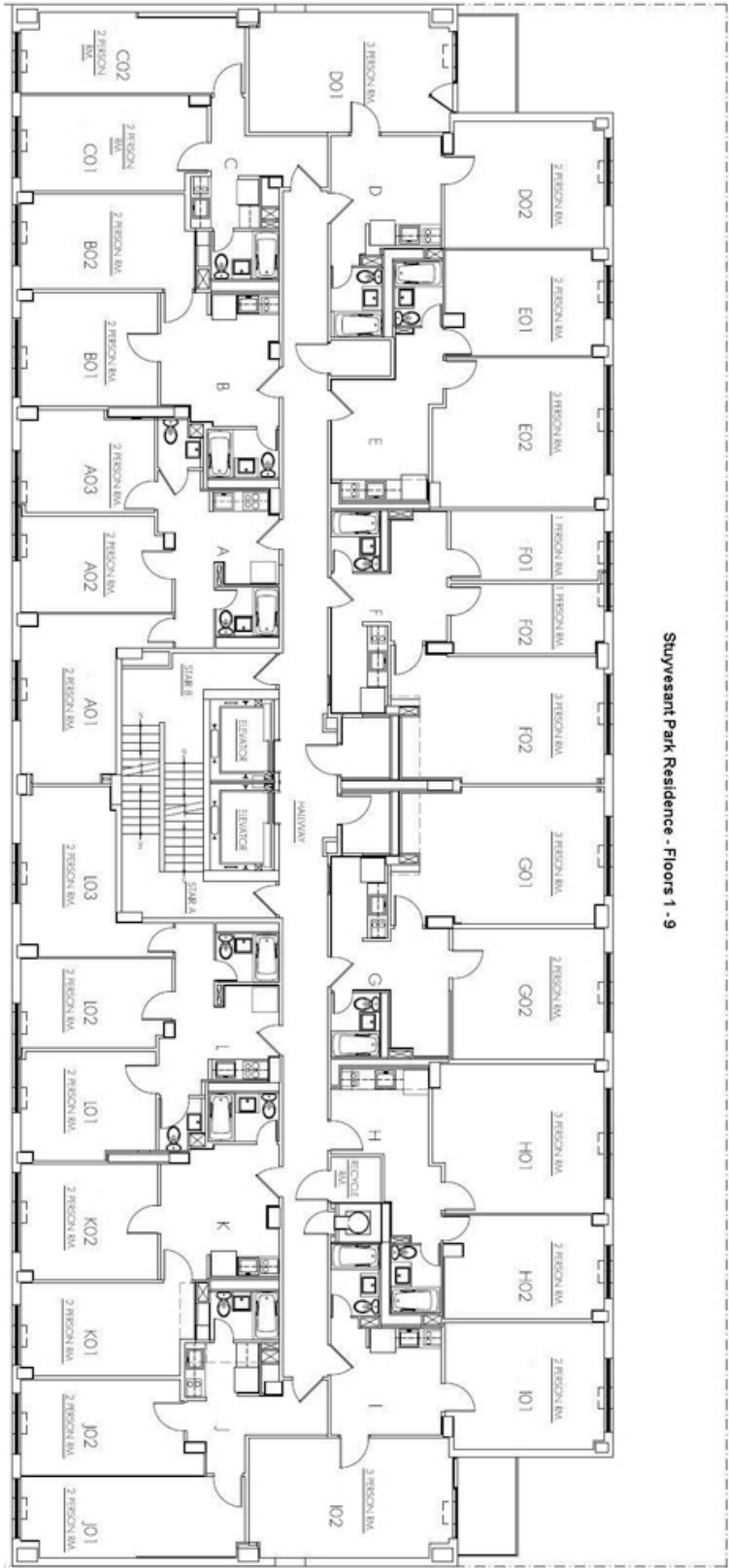


2010 THE NEW SCHOOL SUMMER HOUSING

| |
|---|
| CONTACT INFORMATION |
| summerhousing@newschool.edu 212-229-5459 ext.3610 |
| LOCATION & DESCRIPTION |
| Stuyvesant Park Residence (All ABT students that apply for the New School dorm will be housed here) 318 East 15th Street between 1st & 2nd Avenues 11 floors; suite-style |
| CAPACITY & LAYOUT |
| 647 residents (not all residents will be ABT students) 10 to 12 suites per floor 1 to 6 students per suite Singles; Doubles; Triples |
| RATE |
| Collegiate Summer Intensive: \$1200 (shared), \$1500 (single) New York Summer Intensive: Non-Curfew (ages 19+): \$1920 (shared), \$2400 (single) Curfew (ages 15-18): \$2280 (shared only) Chaperone (must be 21+) and Student (ages 12-18): \$3840 (shared only) |
| FURNISHINGS |
| Long twin beds Each resident has desk, chair, dresser, wardrobe. |
| KITCHEN & BATH FACILITIES |
| Shared baths in each suite Electric stove top, microwave oven, refrigerator in each suite |
| STUDY, WORK & LEISURE AREAS |
| Reading Room, Music Practice Rooms, Art Studio, Spray Paint Room, Exercise Room, TV Lounge |
| LAUNDRY |
| Yes; card-operated |
| AIR CONDITIONING |
| Yes; wall-units |
| TELEPHONE |
| Each suite has assigned phone number & phone jack in room. Free incoming calls only. Local and long distance calling through RCN |
| CABLE TV |
| Limited basic cable TV programming in each suite; TV lounge has basic cable programming |
| INTERNET |
| Each resident has Ethernet data jack in room for free internet access. |
| SECURITY |
| 24-hour security desk; swipe-card access to building and room Curfew is at midnight and curfew students (ages 15-18) must check in with security each night |
| LIVE-IN STAFF |
| Hall Director 2 Head Residents 12 Resident Advisors |

FLOOR PLAN



Stuyvesant Park Residence - Floors 1 - 9