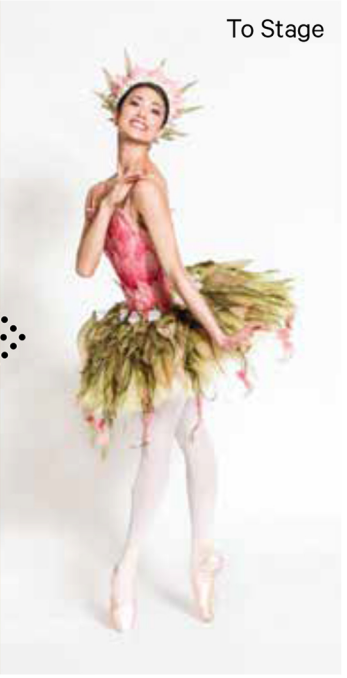


From Sketch to Stage

Mark Ryden's designs and paintings come to life on stage thanks to the hard work of scenic artists who were in charge of building the set and painting scenery, and costume-makers who constructed these beautiful tutus.

Fun Fact
For *Whipped Cream*, 78,000 Swarovski crystals were ordered. 64,000 of them were applied on costumes, and 14,000 were used on scenery.



Artwork by Mark Ryden. Stella Abrera as *Princess Tea Flower*. Photo: Doug Gifford.
Opposite page: Artwork by Mark Ryden. Scene from *Whipped Cream*. Photo: Gene Schiavone.